



311SX2-T



Actual product appearance may vary.

SX Series Subminiature Basic Switch, Single Pole Double Throw (SPDT), 250 Vac, 5 A, Straight Lever Actuator, Solder Termination

Features

- Long operating life
- Elongated mounting hole for easier, more accurate mounting
- Choice of actuation (plunger, as well as a variety of integral and auxiliary actuators)
- Choice of electrical termination (solder, quick connect, PCB)
- Choice of operating characteristics
- Optional series constructions available (gold contacts for low energy switching, bifurcated gold contacts for maximum reliability, power load switching capability to 7 A)
- MIL-PFR-8805 qualified listings available

Potential Applications

- Aerospace
- Appliances
- Vending machines
- Timing devices
- Office equipment
- Computer/business equipment
- Test instruments
- Medical/dental equipment
- Communications equipment
- HVAC equipment
- Manually operated devices
- Valves

Description

MICRO SWITCH™ SX Series subminiature basic switches are used for simple or precision on/off application needs. They are small, precision snap-action switches that are ideal where savings in space and weight are important.

Product Specifications	
Switch Type	Subminiature 8,89 mm H x 5,08 mm W x 12,7 mm L [0.35 in H x 0.20 in W x 0.5 in L]
Sealed	No
Ampere Rating	5 A
Circuitry	Single Pole Double Throw (SPDT)
Actuator	Straight Lever
Termination	Solder
Operating Temperature Range	-55 °C to 125 °C [-67 °F to 257 °F]
Voltage	250 Vac
Approvals	CE, CSA, UL
Actuator Length	12,8 mm [0.505 in]
Contact Type	Silver

Operating Force (O.F.)	0,31 N [1.1 oz] max.
Release Force (R.F.)	0,05 N [0.176 oz] min.
Pretravel (P.T.)	2,92 mm [0.115 in] max.
Overtravel (O.T.)	0,64 mm [0.025 in] min.
Differential Travel (D.T.)	0,89 mm [0.035 in] max.
Operating Position (O.P.)	8,26 mm [1.024 in] ± 1,91 mm [0.325 in ± 0.075 in]
Housing Material	General Purpose Phenolic
High Temperature	204 °C [400 °F]
UL File #	E12252
CSA File #	LR41372
Agency Approvals and Standards	1054
Mounting Centers	4,83 mm [0.19 in]
Maximum Tightening Torque	0,22 N m [2.0 in lb]
Weight	1,36 g [0.003 lb]
Package Height	8,89 mm [0.35 in]
Package Width	5,0 mm [0.20 in]
Package Length	12,7 mm [0.50 in]
Recommended For	Applications requiring gold contacts (1SX type)
Availability	Global
UNSPSC Code	30211905
UNSPSC Commodity	30211905 Snap switches
Series Name	SX

MICRO SWITCH

FREERPORT ILLINOIS, U.S.A.
A DIVISION OF HONEYWELL

FED. MFG. CODE 91929

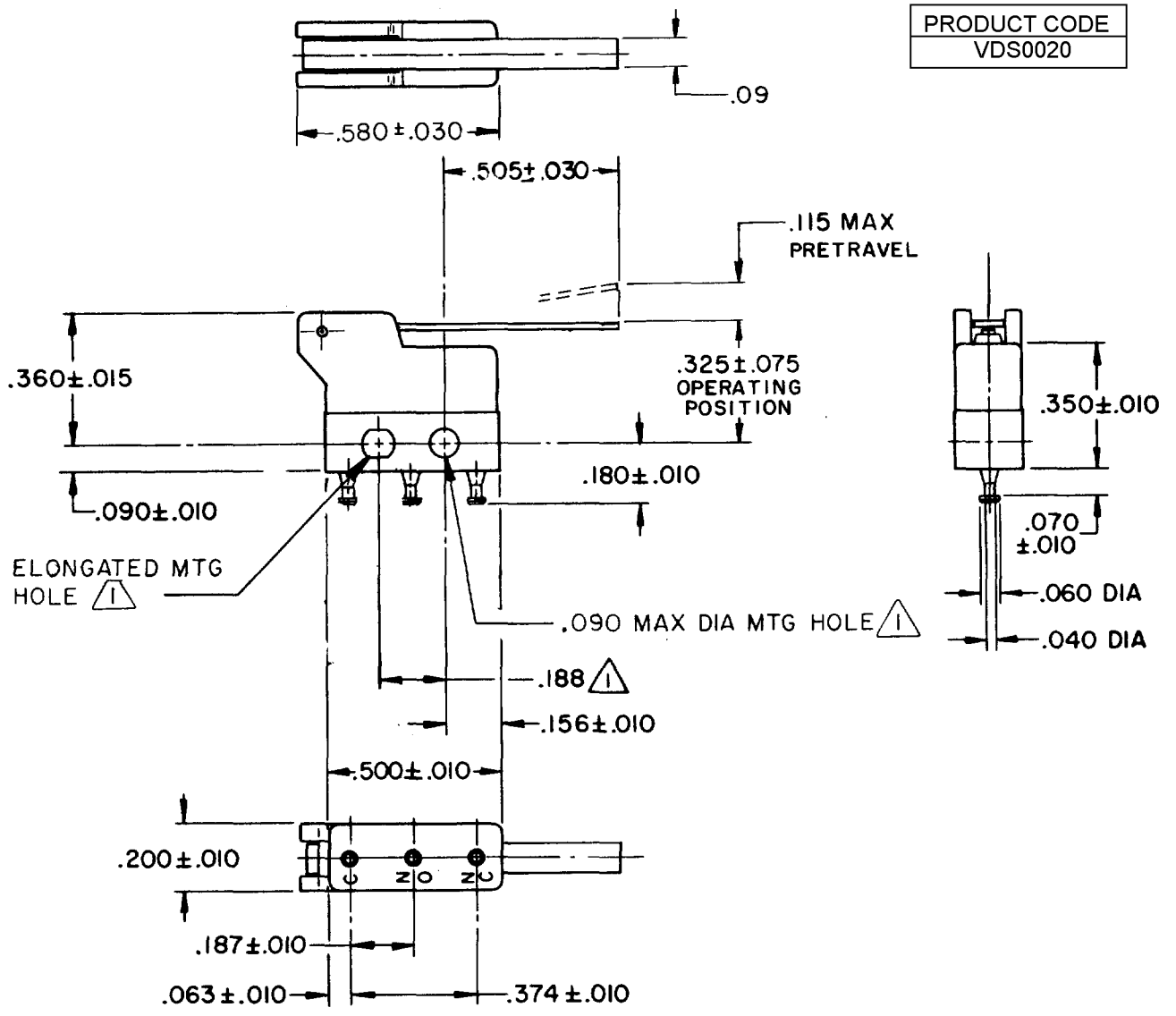
SWITCH-BASIC

CATALOG LISTING

311SX2-T

5

PRODUCT CODE
VDS0020



NOTE -

- 1 - MOUNTING HOLES WILL ACCEPT PINS OR SCREWS OF .087 MAX DIA ON .188 ± .002 CENTERS
- 2 - TERMINALS ARE PLATED FOR SOLDERING
- 3 - SWITCH WILL WITHSTAND TEMPERATURE OF 250° F

THIS DRAWING COVERS A PROPRIETARY ITEM AND IS THE PROPERTY OF MICRO SWITCH, A DIVISION OF HONEYWELL. THIS DRAWING IS NOT TO BE COPIED OR USED WITHOUT THE APPROVAL OF MICRO SWITCH.

CHARACTERISTICS	
OPERATING FORCE	30 GRAM MAX
RELEASE FORCE	5 GRAM MIN
DIFFERENTIAL TRAVEL	.035 MAX
OVERTRAVEL	.025 MIN

ELECTRICAL DATA	
CONTACT ARRANGEMENT SPDT	
28 VOLTS DC RATING	
INDUCTIVE	SEA LEVEL ----- 3 AMP
	50,000 FT ----- 2 AMP
RESISTIVE	SEA LEVEL ----- 5 AMP
	50,000 FT ----- 4 AMP
115 VOLTS AC, 60 CPS	
INDUCTIVE	SEA LEVEL ----- 5 AMP
RESISTIVE	SEA LEVEL ----- 5 AMP

SCALE 2 TO 1

DO NOT SCALE PRINT

UNLESS OTHERWISE NOTED
DIMENSIONS ARE IN INCHES

TOLERANCES ARE:

ONE PLACE (.0)	± .030
TWO PLACE (.00)	± .015
THREE PLACE (.000)	± .005
ANGLES	±

APPROVALS	
KEMA, CE	5A 250V ~ T125 5E4
UL, CSA	5A 250 VAC

WEIGHT

BRAND L4L

311SX2-T
 PAGE 1 OF 1
M
 DRAWING NUMBER
 ISSUE 11
 REVISIONS
 A PR-861 CO-26311 3 SEP 69
 B CO27064 SRH 18 MAR 70
 C CO27302 MBS 15 APR 70
 D CO27999 MBS 25 SEP 70
 E CO28341 MJB 18 DEC 70
 F CO46560 KAK 9 OCT 79
 G CO-61432 JAS 29 DEC 87
 H CO71574 JAL 4 JUN 92
 J 201033 DLT 22 AUG 00
 K 0012136 KR 11APR05
 FO-50378-1A
 DRAWN
 GFS 20 FEB 69
 RASTER
 RELEASE NO. PR-861
 CHECK
 AK
 CHECK
 IMAY 62
 CHECK
 11APR05
 CHECK
 20 FEB 69
 REPLACES X41465-SX